

Tekanyetso ya Gauteng 2005/2006

Re hlalisa Bajete ya MTEF ya Mmuso wa Profensi ya Gauteng selemong seo ka sona re ketekang Dilemo tse 50 tsa Tokomane ya Mmuso ya Tokoloho (Freedom Charter).

Ha e le mona re keteka Dilemo tsena, ka Bajete ena re abile mehlodi ka tsela e tla ntshetsa pele maikemisetso a motheo a Tokomane ena ya Tokoloho le ho tiisa tseo re di fumaneng ka ho eketsa phumantsho ya bophelo bo botle ho bohle.

Ho tloha ka selemo sa 1994, re ile ra atleha ho etsa motheo o tiileng oo hodima ona re ka thehang merero ya rona ya tshebetso. Diphetho tsa mosebetsi wa rona di qala ho totobatsa hore ho na le phihlelo ya ditshebeletso tsa setjhaba, tshebetso ya setjhaba e atlehileng le kgolo ya moruo. Re atleha ho theha setjhaba se atlehileng se theilweng hodima tekatekano le seriti se tshwanelang bohle.

Diithoko tsa rona tsa motheo tsa nako ena ya jwale mmusong ke tsena tse latelang:

- Ho thusa hore ho be le kgolo e potlakileng ya moruo le ho thehwa ha mesebetsi
- Ho lwantsha bofuma le ho theha ditjhaba tse bolokehileng, tse babalesehileng mme tse phelang hantle ka nako tsohle
- Ho aha batho ba phetseng hantle, ba nang le tsebo ya mesebetsi mme ba nang le tlhahiso e bonahalang
- Ho tiisa demokerasi le kaho ya setjhaba esita le ho fihlella ditokelo tsa batho ba rona tsa molao wa motheo
- Ho aha mmuso o sebetsang ka matla mme o hlakomelang

Bajete ena e bontsha kamoso dintlha tsena tsa motheo di tla fihlellwa ka teng ka ho latela mananeo a fapaneng le mesebetsi e itseng ya Mmuso wa Profensi ya Gauteng ka nako ya dilemo tse tharo tsa diitjhelete.

Mokgwa wa Mmuso wa Gauteng wa Kgolo le Ntshetsopele o ikamahanya le boitlamo ba rona ba ho sebeletsa hore ho be le morero o matla wa setjhaba wa ho fokotsa bofuma ka lehare le tlhokeho ya mesebetsi ka ho ntshetsa pele maemo a phahameng a moruo wa dinako tsohle. Re tla shebana hape le diphephetso tsa moruo wa bobedi e leng karolo ela ya moruo wa rona e tsejwang ka tlhokeho e phahameng ya mesebetsi, tlhokeho ya tsebo ya mesebetsi esita le ho ba le tswelopele e fokolang ka kakaretso.

Mesebetsi ya setjhaba e etsa 81% ya itjhelete yohle ya bajete e sebediswang e bontshang boitlamo ba rona ba ho hlalisa mesebetsi e atlehileng ya setjhaba ho baahi bohle ba Gauteng. Re bile re fane ka mehlodi ya mesebetsi ya disebediswa le mesebetsi ya boithaopo ya profensi e ntshetsang pele kgolo ya moruo, tlhahiso ya mesebetsi le ho phehisa twantshong ya bofuma.

Ke tshepa hore o tla fumana tokomane ena e le e molemo haholo ho eketsa kutlwisiso le tshekatsheko ya Bajete ena ya 2005MTEF ya Profensi ya Gauteng.



Paul Mashatile

Leloko la molao phethahatso la Gauteng la diitjhelete le Ekonomi

Hobaneng re hloka tsamaiso ya ditjhelete?

Tsamaiso ya tjhelete ke tsela e bontshang hore tjhelete eleng teng eka sebediswa jwang. Tsamaiso ya tjhelete e re thusa hore re finyelle boemong boo rona re ipehetseng bona.

Re na le boikarabelo ba hore re tsebise setjhaba ka diketsahalo tsa mmuso le hore ditjhelete di sebediswa jwang.

Ka ho pepesa tsamaiso ya tjhelete re hlahisa hammoho le morero wa mmuso mabapi le tsela eo tshebetso e ka lekangwang ka teng.

Bukana ena e hlalosa tshebetso ya ditjhelete tsa Gauteng bakeng sa selemo sa ditjhelete sa 1 Motsheanong 2005 ho fihlela 30 Hlakubele 2006

Ke eng ditlhoko tsa sehloho le Merero tse nkilweng ke Lekgotla-kgolo la puso ya Gauteng?

■ Ho phethahatsa potlako ya ikonomi le ditshebeletso

Mehato le mananeo

Netefatso le tshehetso ya dipatlisiso

- Thulahanyo ya ikonomi ho kenyeletsa Gautrain Rapid Rail Link le ditshebeletso tsa boditjhabatjhaba le boemafofane
- Ho nka matla a basebetsi ho akaretsa makhotla a thuto a itshetlehileng ka ikonomi
- Ditulo tse kgethehileng tse nonofatsang ikonomi le tlhaboloho
- Ho matlafatsa Gauteng fapheng la dipeeletso, boeti, kgwebo, tlhodisano le dipapading
- Ntshetsopele ya kgwebo tse kgolo le tse nyenyane ho bula menyetla hore batho ba iqalle dikgwebo tsa bona
- Ho bapala karolo e bohlokwa thekisong ya thepa le kabong ya ditshebeletso
- Ho atisa tsa bolemi hore bo ra polasi ba batsho ba eketsetse
- Ho aha Gauteng hore e be maemong a ho dimo hoka hlodisana le mabatowa amang a hlwahlwa

■ Ho lwantsha bofuma le ho aha setjhaba se tiileng le se ikemetseng

Mehato le mananeo

Tlhahisa ya mananeo a tsitsitseng ho netefatsa disebediswa tsa setjhaba tse tsepameng. Lenaneo lena le tla netefatsa hore:

- Tulo tsa setjhaba tse ntjha di fumana ditshebeletso tse hlokwang pele ho kapa ka mora hore batho ba kene matlong a matjha
- Dithoto tsa setjhaba di tla nne di fetohe ho ya ka ditlhokeho tse fetohang tsa baahi. Mohlala, dikolo tse haellwang hoyu ka lenane la barutwana ditla fetolwa ho ba sentara tsa setjhaba
- Dipeeletso tsa puso ditla itshetleha hodima ha dibaka tsa batho bohle kapa dibaka tsa dipalangwanag tsa bohle
- Dikontraka di tla abelwa borakgwebo potlana mme basebetsi dikontrakeng le mesebetsing ya ho lokisa batla sebetsa ka bongata
- Dithoto tsa setjhaba ditla hlokomelwa hore tshebediso ya tsona e be ya sebaka se se lelele

Ke eng dithoko tsa sehloho le Merero tse nkilweng ke Lekgotla-kgolo la puso ya Gauteng?

- Ho kengwa tshebetsong ha lenaneo le atolositsweng la mesebetsi ya setjhaba mona Gauteng ho tla kenyeletsa mananeo a ntseng a le teng
- Ho netefatsa nehelano ya ditshebeletso tse bohlokwa ho bohle, ho kenyelletsa bonyenyane ba metsi le motlakase ka sesolo
- Ho aha matlo ka bongata tulong tse ikgethileng ho batho ba hloakang bodulo
- Ho etsa hore tulo tsa baipei di be molaong, ebe tse bolokehileng ebile di loketse bodulo bo kgotsofatsang
- Tsosoloso ya tulo tsa ditoropong
- Tseletsapele le ho kgothaletsa maiteko a ikonomi ya selehae
- Kaho le ho kenya tshebetsong le taolo ya mokgwa wa tsamaiso ya dipalangwang tsa bohle
- Ho aha tulo tse bolokehileng le tse lokelang bophelo bo botle
- Tshebetso mmoho ya setjhaba le sepolesa ho netefatsa mmila, mahae, tulo tsa mesebetsi le dikolo tse bolokehileng, re shebile haholo ho tshireletso ha bomme le bana
- Ho netefatsa polokeho ditseleng tsa Gauteng ka tsamaiso e hlwahlwa ya tsa pharakano

■ Ho aha setjhaba se itekanetseng, se nang le bokgoni ebile se sebetsa ka thata Mehato le mananeo

- Ho kgothaletsa ho ja dijo tse itekanetseng le mekgwa ya bophelo bo botle
- Mananeo a thibelo le phekolo ho thibeletsa di sosa tsa mafu
- Ho neelana ka ditshebeletso tse ikgethileng tsa bophelo bo botle le tlhokomelo
- Kakaretso ya ditshebeletso kaofela tsa bophelo bo botle
- Ho tseletsapele le ho aba thuto e hlwahlwa baneng ba banyane
- Ho akaretse le ho tiisa thuto dikolong tsa setshaba
- Ho neelana ka bokgoni ho batho ha holo ho batjha ka dithuto tsa Further Education and Training le ho kgothaletsa boithuti
- Ho kgothaletsa ho tswelapele ka dithuto le nakong ya boholo
- Ho tlisa mmoho diintasteri, ditheo tsa thuto e phahameng, bokgoni ha mmoho le mafapha ohle a mmuso. Sena se tla netefatsa hore ho nale basebetsi ba nang le bokgoni kgodisong ya ikonomi

Ke eng ditlhoko tsa sehloho le Merero tse nkilweng ke Lekgotla-kgolo la puso ya Gauteng?

■ Kgodiso ya demokrasi le tswelisopele ya ditokelo tsa Molao Theo

Mehato le mananeo

- Thibelo ya botlokotsebe setjhabeng le ho fedisa disosa tsa botlokotsebe le tlhekefetso haholo ho bana le bomme
- Ho lemosa batjha ka bohlokwa ba thuto le tswelisopele hore banke karolo ho hodiseng ekonomi ka menyetla e balebaneng
- Ho matlafatsa seabo sa bomme ka mananeo ohle a mmuso hore bakgone ho nka karolo e lekanang le ya bohle ho tsa ikonomi le setshabeng
- Ho kenya mananeo a bokgabo, setso le dipapadi ho aha setshaba se tiileng
- Ho ntshetsa pele lenaneo la dipapadi ho aheng setshaba lentshetsopele ya batjha
- Ho kgothaletsa setshaba ho nka karolo le boikarabelo
- Ko kgothaletsa ho nka karolo mererong ya demokrasi ka kakaretso

■ Ho aha mmuso o mafolofolo le o hlokomelang

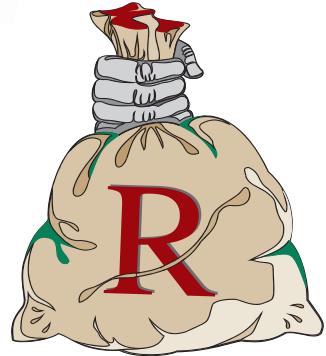
Mehato le mananeo

- Ho neela setshaba diitsebeletso tsa mmuso tsa boemo bo phahameng, bo hlokolotsi
- Ho aha mmuso ka basebeletsi ba ona
- Ho etsa hore mmuso o fihlelle setshaba ka mekgwa e latelang
 - Ho ba le tlhahiso leseding ka diitsebeletso tsa mmuso
 - Tiiso ya puisano le dikgokahanyo le setshaba
 - Ho tiisa mekgwa ya ho amohela ditlitlebo
- Ho sebedisa disebediswa tsa mmuso ka mekgwa o tsepameng hore mmuso o fihlelle maikemisetso a ona.
- Ho kenya tshebetsong mekgwa ya mmuso e kgahlanong le bonokwane
- Tshebetso mmoho le mmuso wa selehae ho tlisa diphetoho

Refumana tjhelete ya rona ho kae?



Ditekanyetso/kabo ya ditjhelete ho tswa ho mmuso o phahameng
= Bilione tse R32,045 (95%)



DIPOKELETSO

= Bilione tse R33,559



Tjhelete ya Profensi
= Bilione tse R1,514 (5%)

Tjhelete etswang
= Milione tse R36,5

Tjhelete ebokeditsweng
= Bilione tse R33,523

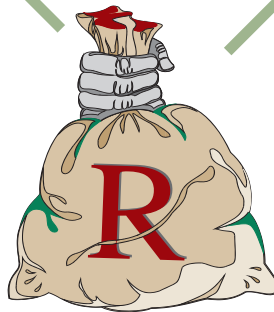
Mehlodi ya ditjhelete tsa Profensi



**Lekgetho la motshaela
(Gambling taxes)**
= Milione tse R372,6
(24,6%)



Tjhelete tsa bakudi
= Milione tse R167,3
(11,1%)



TJHELETE YA PROFENSI
= Bilione tse R1,514



Dilaesense tsa dikoloi
= Milione tse R744,2
(49,1%)



Tse ding
= Milione tse R230,4
(15,2%)

Re sebedisa tijelete ya rona jwang?

Karolelano ya ditjelete ho ya ka mosebetsi



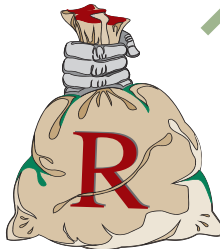
Tsa Thuto
= Bilione tse
R10,360 (31%)



Tsa Bophelo
= Bilione tse
R9,258 (27,7%)



**Lefapha la
Tshebeletso le
Ntshetsopele ya
Sechaba**
= Bilione tse
R7,541 (22,6%)



DITEKANYETSO KA KAKARETSO
= Bilione tse R33,408



**Lefapha la
Dipalangwa tsa
Sechaba, Ditsela le
Mosebetsi**
= Bilione tse
R1,446 (4,3%)



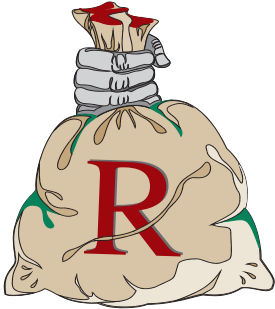
Tsa Matlo
= Bilione tse
R1,648 (4,9%)



Tse ding
= Bilione tse R3,155
(9,5%)

Re sebedisa tijelete ya rona jwang?

Karolelano ya ditjhelete ho ya ka mekga e fapaneng ya tsa ekonomi



DITEKANYETSO KA KAKARETSO

= Bilione tse R33,408

Ditefello tsa hona jwale

= Bilione tse

R20,246 (60,6%)

Neheletsano le kemelano

= Bilione tse

R11,707 (35%)

Ditefello tsa

kapitale

= Bilione tse R1,455 (4,4%)

Karolelano ya ditjhelete ho ya ka ditloko tse kgolo

**DITEKANYETSO KA
KAKARETSO**

= Bilione
tse R33,408

Ditefello tsa basebetsi

= Bilione tse R14,636 (43,8%)

Phahlo le Ditshebeletso

= Bilione tse R5,574 (16,7%)

Nehelano ho tsa le hare

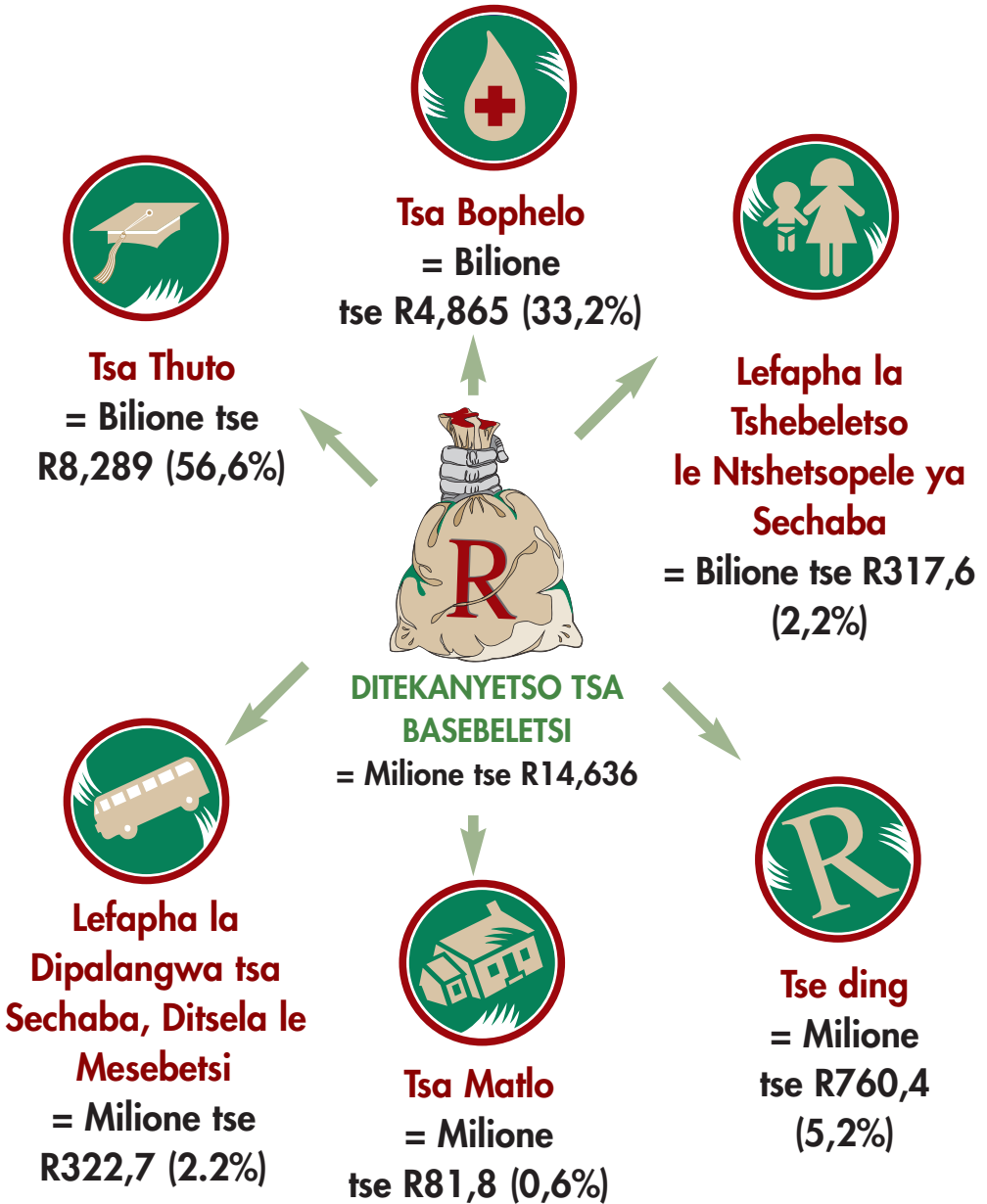
= Bilione tse R7,999 (23,9%)

Tse ding (akaretsang tefello

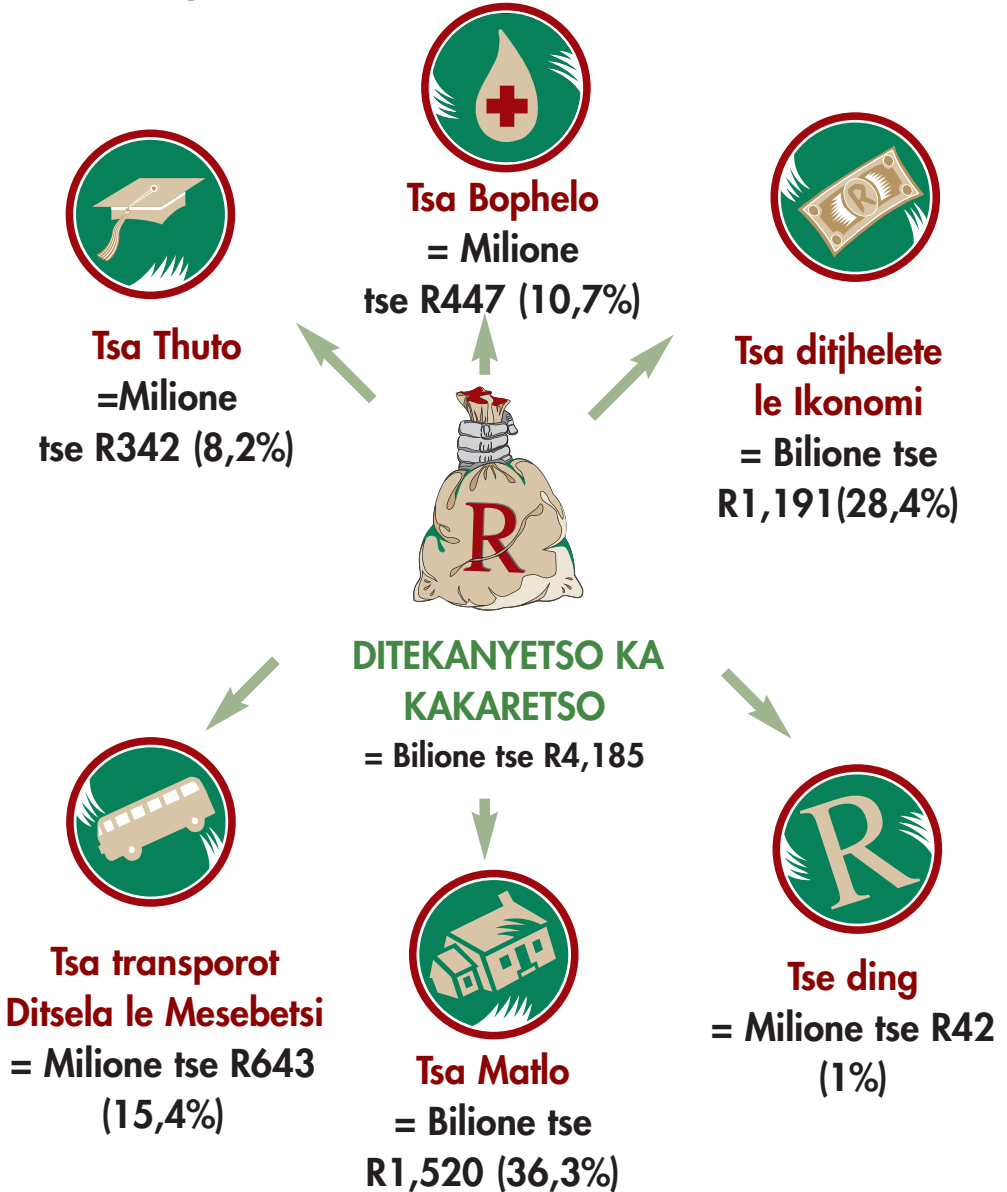
tsa kapitale)

= Bilione tse R5,199 (15,6%)

Ditefello tsa basebeleksi

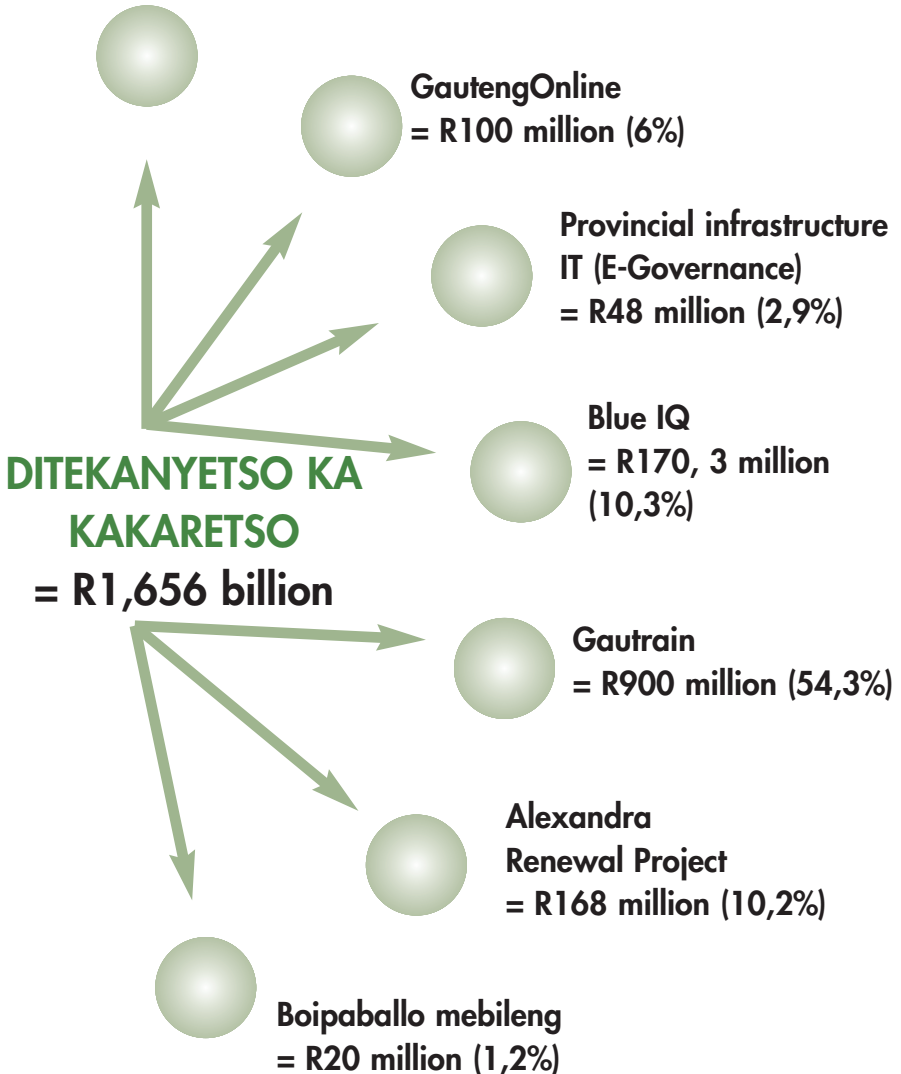


Diprojeke tsa kapitale ho ya ka lefapha ka leng



Di Projeke tsa bohlokwa

Growth and Development Strategy (GDS)
= R250 million (15.1%)



Nyollo ya tshebediso ya ditjhelete e bile ho kae?

	Re sebedisitse jwang tjhelete selemong se fetileng (2004/05) bilione	Re tlo sebedisa jwang tjhelete selemong sena? (2005/06) bilione	Re nyolositse kapa re theohile ka bokae %
Tsa Thuto	10,027	10,360	3%
Tsa Bophelo	8, 943	9,258	4%
Lefapha la Tshebeletso le Ntshetsopele ya Sechaba	6,439	7,541	17%
Tsa ditjhelete le Ikonomi	1, 179	1,285	43%
Tsa Matlo	1,440	1,648	14%
Tse ding	3,179	2,916	(18%)
TEKANYETSO KA KAKARETSO	31,207	33,408	7%

